

SA Oil Bath Air Cleaners



The SA series is similar to the S style in looks and design. In addition to being compact and lightweight, the SA's outlet is flanged which allows for direct mounting without any Band or Saddle Brackets.

Vortex Air Technology S and SA Oil Bath Air Cleaners

The S and SA Oil Bath Air Cleaners are smaller and light weight, requiring less space for mounting. Both S and SA styles are made of three units: the Body Assembly, Vortex Chamber, and Cup. The air is first centrifugated by the Vortex Chamber to separate large particles of dust. Air then flows into the filter element located in the Body Assembly, along with oil from the oil reserve. Dust is suspended in the air. Clean air passes through the filter and the dusty oil drains back to the Cup.

Also available:



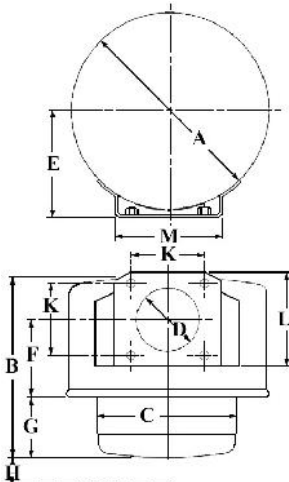
G w/Clamps

G w/Rods

GA

S

Oil Bath Air Cleaners - SA Series



Model No.	Rated Airflow C.F.M.	Oil Cap. Pints	A (In.)	B (In.)	C (In.)	D (In.)	E (In.)	F (In.)	G (In.)	H (In.)	K (In.)	L (In.)	M (In.)	Internal Thread	Net Wt. LBS
SA60	100	1.10	6.12	7.12	4.56	2.06	3.38	2.81	2.44	0.50	2.87	3.75	4.25	3/8-16NC2	3.60
SA78	160	1.00	7.80	7.25	5.56	2.56	4.25	3.31	2.25	0.50	2.88	3.75	4.25	3/8-16NC	5.70
SA90	240	1.80	9.06	8.25	6.56	2.56	4.88	3.46	3.00	0.62	2.88	3.75	4.25	3/8-16NC	7.30
SA90P	240	1.80	9.06	8.25	6.56	2.56	4.88	3.45	4.50	0.62	2.88	3.75	4.25	3/8-16NC	7.30
SA110	425	3.50	11.00	12.75	8.03	3.50	6.00	5.18	5.25	1.75	3.88	7.50	5.50	½ -13NC	15.00
SA110R	425	3.50	11.00	12.75	8.50	3.50	6.00	5.19	5.25	1.75	3.88	5.81	5.50	½ -13NC	15.00
SA120	540	5.80	12.19	13.88	10.00	3.50	6.50	7.25	6.63	2.38	3.88	6.25	5.50	½ -13NC	20.80