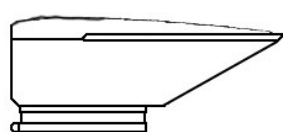


CLR Inlet Caps

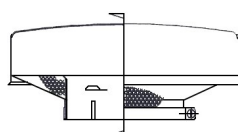


The CLR series are identical to the CL style with the addition of a 180° rain shield. The rain shield, located at the front of the Inlet Cap, provides added protection from moisture, making it the most efficient Inlet Cap. Select models are available in Stainless Steel and are indicated by the prefix "SSB."

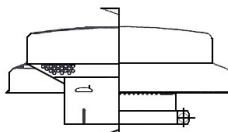
Also Available:



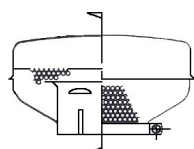
CFA Series



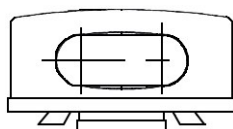
CJ Series



CL Series



CS Series

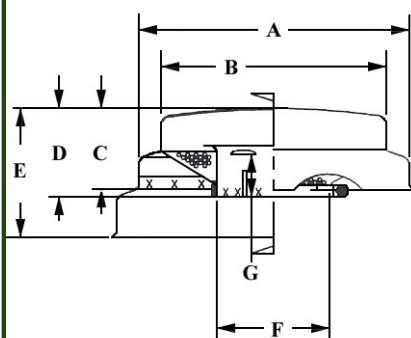


CW Series

Vortex Air Technology Inlet Caps

Inlet Caps are an essential component in the protection of filter elements used in both dry and oil bath air cleaners. They function as a pre-filtering mechanism for the air cleaner, preventing large particles of debris from potentially harming the air cleaner and filter element in addition to shielding water ingress.

Inlet Caps - CLR Series



SSB = Polished Stainless Steel

| Model No. | A (mm.) | B (mm.) | C (mm.) | D (mm.) | E (mm.) | F (mm.) | G (mm.) | Net Wt. KG |
|----------------|------------|------------|------------|------------|------------|------------|------------|---------------|
| CLR12050 | 306.32 | 255.52 | 91.95 | 100.08 | 146.05 | 127.76 | 47.75 | 1.58 |
| CLR14050 | 357.12 | 306.32 | 95.25 | 119.13 | 165.10 | 127.76 | 47.75 | 2.31 |
| CLR14060 | 357.12 | 306.32 | 95.25 | 127.00 | 165.10 | 153.16 | 47.75 | 2.40 |
| SSB-CLR14060 | 357.12 | 306.32 | 95.25 | 127.00 | 165.10 | 153.16 | 47.75 | 2.40 |
| SSB-CLR14070A | 357.12 | 306.32 | 95.25 | 131.83 | 165.10 | 177.80 | 47.75 | 2.27 |
| SSB-CLR14070B* | 357.12 | 306.32 | 95.25 | 145.29 | 165.10 | 177.80 | 47.75 | 2.27 |
| CLR16055 | 407.92 | 344.42 | 107.95 | 136.65 | 172.97 | 140.46 | 47.75 | 3.06 |
| CLR16060 | 407.92 | 344.42 | 107.95 | 130.05 | 172.97 | 153.16 | 47.75 | 2.81 |
| SSB-CLR16060 | 407.92 | 344.42 | 107.95 | 130.05 | 172.97 | 153.16 | 47.75 | 2.81 |
| CLR16070 | 407.92 | 344.42 | 107.95 | 123.95 | 172.97 | 178.82 | 47.75 | 2.81 |
| SSB-CLR16070 | 407.92 | 344.42 | 107.95 | 123.95 | 172.97 | 178.82 | 47.75 | 2.81 |
| CLR16080 | 407.92 | 344.42 | 107.95 | 146.05 | 172.97 | 203.96 | 47.75 | 2.90 |

* Offset Inlet Tube



AUSTRALIAN OWNED
& OPERATED

www.vortex.com

F-3110B
250616