



VORTOX AIR TECHNOLOGY, INC.

DB Breather Caps



Vortox Air Technology, Inc. Breather Caps are designed to be used in both negative and positive pressure atmospheres. In negative pressure, the initial media filters out any contamination in the air stream that could potentially harm internal components. When used in a positive pressure application, oil and dirt are captured in the filter media contained within the internal reservoir. As air flow stops, the oil will flow back to its source from the reservoir. The outer media serves as a secondary filter prior to the air re-entering the atmosphere oil free.

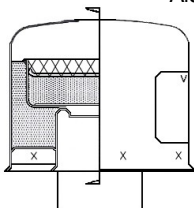
Filter Media

Standard Filter Media is a non-toxic, washable cellular foam. Alternate media of either steel or stainless steel mesh is also available.

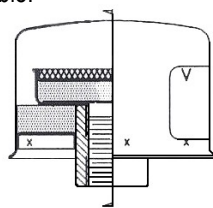
Service Instructions

Periodically inspect for accumulation of dirt. Remove Breather Cap, wash in common detergent and rinse. Allow media to dry, then reinstall Breather Cap.

Also available:

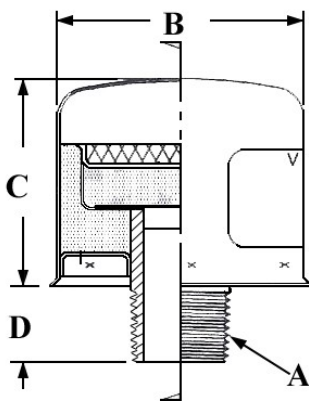


Type DA
Slip-On Tube



Type DC
Internal Pipe Thread

Breather Caps - DB Series: External Pipe Thread



Models available in stainless steel.

MEDIA

1. Foam
2. Woven Steel Wire
3. Stainless Steel Wire

* Not available with condensing chamber

| Model No. | A (In.) NPTM | B (In.) | C (In.) | D (In.) | Net Wt. Lbs. | Media |
|-----------|-----------------|------------|------------|------------|-----------------|-------|
| DB25* | ¼ | 2.25 | 1.75 | 0.75 | 0.25 | 1 |
| DB25A* | ¼ | 2.25 | 1.75 | 1.25 | 0.25 | 2 |
| DB50* | ½ | 2.25 | 1.75 | 0.75 | 0.30 | 1 |
| DB50B* | ½ | 2.25 | 1.75 | 1.25 | 0.30 | 2 |
| DB50D* | ½ | 2.25 | 1.75 | 0.75 | 0.30 | 3 |
| DB75* | ¾ | 2.25 | 1.75 | 0.75 | 0.40 | 1 |
| DB75F* | ¾ | 2.25 | 1.75 | 0.75 | 0.50 | 2 |
| DB100 | 1 | 3.25 | 2.75 | 1.00 | 0.70 | 1 |
| DB100G | 1 | 3.25 | 2.75 | 1.00 | 0.70 | 3 |
| DB125 | 1¼ | 3.25 | 2.75 | 1.00 | 0.85 | 1 |
| DB150 | 1½ | 3.25 | 2.75 | 1.00 | 1.00 | 1 |
| DB200 | 2 | 5.06 | 3.44 | 1.00 | 2.00 | 1 |
| DB200A | 2 | 5.06 | 3.44 | 1.00 | 2.20 | 3 |
| DB200D | 2 | 5.06 | 3.44 | 1.00 | 2.00 | 1 |
| DB200E | 2 | 5.06 | 3.44 | 1.00 | 2.00 | 2 |
| DB300 | 3 | 7.00 | 6.56 | 1.75 | 5.40 | 1 |
| DB300A | 3 | 7.00 | 6.56 | 1.75 | 5.40 | 2 |
| 13700 | ½ | 3.25 | 4.44 | 0.75 | 1.30 | 1 |



www.vortox.com



F-3006A
04-30-18