

S Oil Bath Air Cleaners

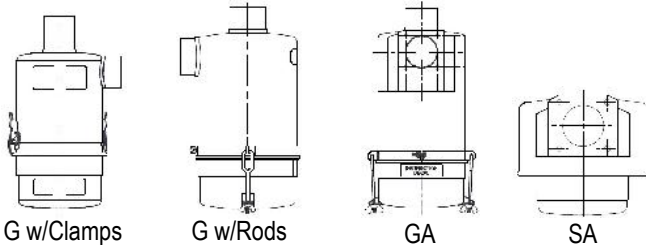


The S series is a highly efficient Oil Bath Air Cleaner, which has a horizontal tubular outlet for use with a hose. It is designed to be mounted vertically with the assistance of a Saddle Bracket.

Vortex Air Technology S and SA Oil Bath Air Cleaners

The S and SA Oil Bath Air Cleaners are smaller and light weight than the G or GA, requiring less space for mounting. Both S and SA styles are made of three units: the Body Assembly, Vortex Chamber, and Cup. The air is first centrifugated by the Vortex Chamber to separate large particles of dust. Air then flows into the filter element located in the Body Assembly, along with oil from the oil reservoir. Dust is suspended in the air. Clean air passes through the filter and the dusty oil drains back to the Cup.

Also available:



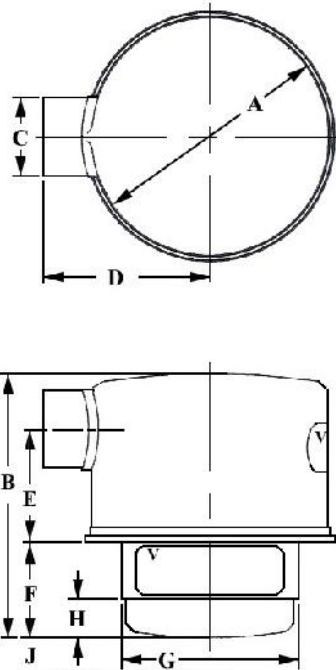
G w/Clamps

G w/Rods

GA

SA

Oil Bath Air Cleaners - S Series



Model No.	Rated Airflow m ³ /h	Oil Cap. Liters	A (mm.)	B (mm.)	C (mm.)	D* (mm.)	E (mm.)	F (mm.)	G (mm.)	H (mm.)	J (mm.)	Net Wt. KG
S50	107	0.57	134.87	229.11	38.10	99.82	87.12	108.20	103.38	61.21	38.10	1.18
S50-K	107	0.57	134.87	229.11	38.10	99.82	87.12	108.20	103.38	61.21	38.10	1.18
S60	169	0.33	155.44	169.67	50.80	109.47	86.87	61.97	115.82	24.38	12.70	1.27
S60AA	169	0.33	155.44	169.67	50.80	136.39	71.12	61.98	115.82	24.38	12.70	1.27
S60A-K	169	0.33	155.70	169.67	50.80	136.65	71.12	61.98	115.82	24.38	12.70	1.27
S60AB	169	0.52	155.44	187.45	50.80	109.47	71.63	79.25	115.82	41.91	12.70	1.27
S60B	169	0.33	155.44	169.67	38.10	109.47	77.47	61.98	115.82	24.38	12.70	1.27
S60K	169	0.33	155.44	169.67	41.15	109.47	74.42	61.98	115.82	24.38	12.70	1.27
S60W	220	0.33	155.44	165.10	66.55	109.47	57.15	58.67	115.82	24.38	12.70	1.27
S78	271	0.47	198.12	184.15	63.50	130.05	84.07	57.15	141.22	24.64	12.70	2.18
S78AG	271	0.47	198.12	184.15	47.75	130.05	90.42	57.15	141.22	24.64	12.70	2.18
S78B	271	0.47	198.12	184.15	50.80	130.05	90.42	57.15	141.22	24.64	12.70	2.18
S78D	271	0.47	198.12	184.15	57.15	130.05	87.37	57.15	141.22	24.64	12.70	2.18
S90	407	0.85	230.12	209.55	63.50	146.05	87.88	76.20	166.62	25.40	15.75	2.90
S110	722	1.65	279.4	323.85	88.90	177.80	131.57	133.35	203.96	31.75	44.45	6.80
S110E	628	1.65	279.40	323.85	76.20	177.80	134.87	133.35	203.96	31.75	44.45	5.22
S120	917	2.74	304.80	352.55	88.90	203.20	184.15	107.95	254.00	28.70	60.45	8.84
S120M	764	2.74	306.32	352.55	101.60	203.20	177.80	108.20	255.52	28.45	60.45	8.84

* Other Tube Dimensions Available