

BA Saddle Brackets

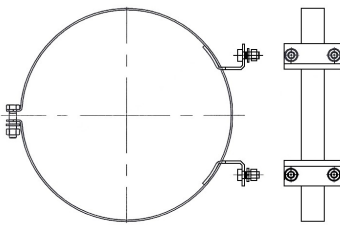


BA Saddle Brackets originated the Band and Saddle Bracket line. Originally designed to mount our G style Oil Bath Air Cleaners, BA Saddle Brackets mount securely and snugly to any unit with four mounting bolts located on two adjustable legs, which offer custom fitting. Current models range from 5" to 13.5" in diameter. Customization available upon request.

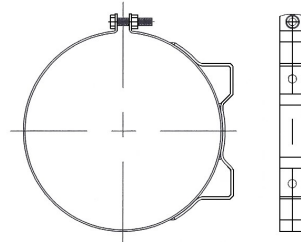
Vortex Air Technology Saddle Brackets

Vortex Air Technology Band and Saddle Brackets are designed to efficiency and securely hold your application in place. Built entirely with heavy gauge steel, our Band and Saddle Brackets have the ability to support any application and stand the test of time. Customers have the option of choosing Carbon Steel or T304 Stainless Steel for construction material. Finishes are available in painted black powder coat or polished Stainless Steel. Sizes currently offered range from 5" to 18" in diameter. We welcome customization in band diameter and width (thickness), placement of mounting pilot holes and slots, and placement of band closure to avoid mounting difficulties due to obstructions.

Also Available:

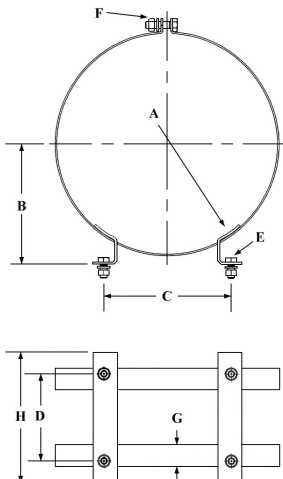


BC Saddle Brackets



BB Band Brackets

Saddle Brackets - BA Series



Model No.	A (In.)	B (In.)	C (In.)	D (In.)	E (In.)	F (In.)	G (In.)	H (In.)
BA55	5.56	3.75	3.19	1.88	5/16-18NC × 0.75	5/16-18NC × 1.25	1.00	2.50
BA65	6.56	4.22	3.75	3.38	5/16-18NC × 0.75	5/16-18NC × 1.25	1.00	4.00
BA73	7.31	4.50	4.25	3.38	5/16-18NC × 0.75	5/16-18NC × 1.25	1.00	4.50
BA100	10.06	5.56	5.88	4.00	5/16-18NC × 0.75	5/16-18NC × 1.25	1.00	6.00
BA110	11.00	6.00	6.25	4.00	5/16-18NC × 0.75	5/16-18NC × 1.25	1.00	6.00
BA120	12.09	6.88	7.00	4.00	7/16-14NC × 1.00	5/16-18NC × 1.25	1.50	6.00
BA135	13.59	7.50	8.00	5.75	7/16-14NC × 1.00	5/16-18NC × 1.25	1.50	7.75